



Social Mobility
Commission

2023 State of the Nation report: People and Places

September 2023

Today's session

- **Welcome** – Paula Kemp, Head of Employer Engagement
- **Introduction** – Alun Francis OBE, Chair
- **SoN Highlights** – Michael Pandazis, Head of Analysis
- **Data Explorer Tool** – Jacalyn Guy, Deputy Director, Evidence & Analysis
Rosa Alonso, Senior Data Analyst
- **Next steps for the SMC** – Alun Francis OBE, Chair
- **Audience Q&A**
- **Thank you**



Social Mobility
Commission



Introduction to State of the Nation 2023

Alun Francis OBE

Chair of the Social Mobility Commission

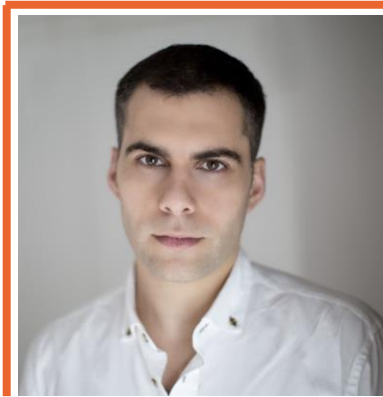


Social Mobility
Commission

State of the Nation (SoN) 2023: Highlights



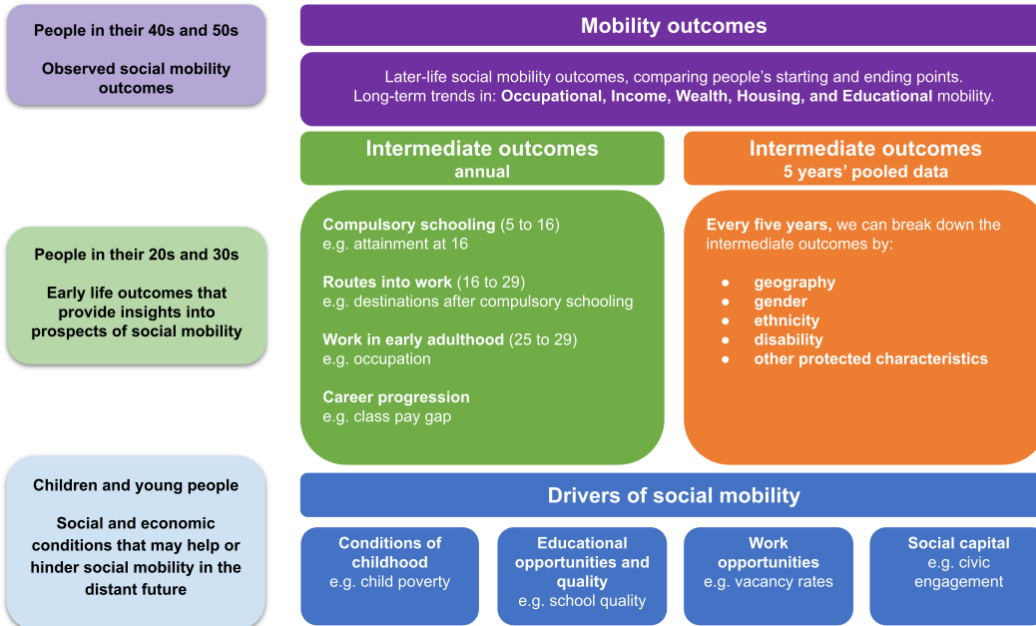
Social Mobility
Commission



Michael Pandazis

Head of Analysis
SMC

What does the new Index look like?

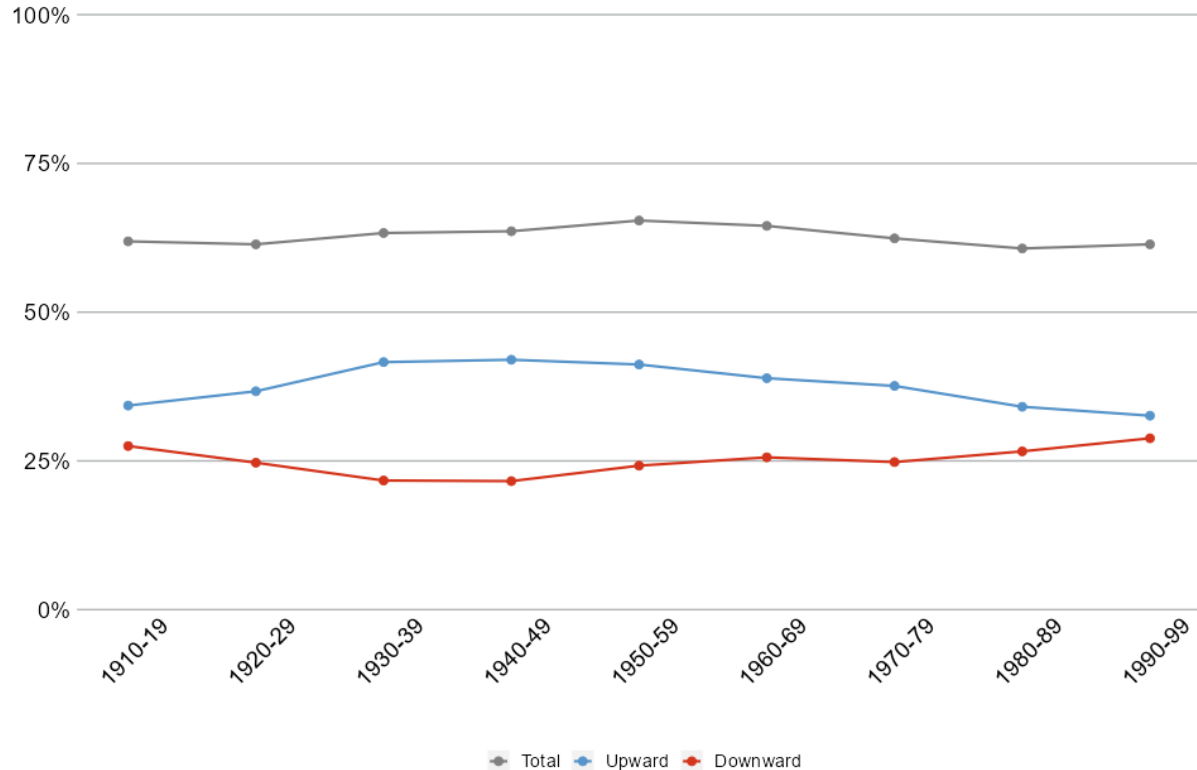


- The first systematic look at **social mobility outcomes**.
- Includes outcomes like **occupation, income, wealth, education and housing**.
- A new 5-part division of SEB:
 - higher professional
 - lower professional
 - intermediate
 - higher working class
 - lower working class.

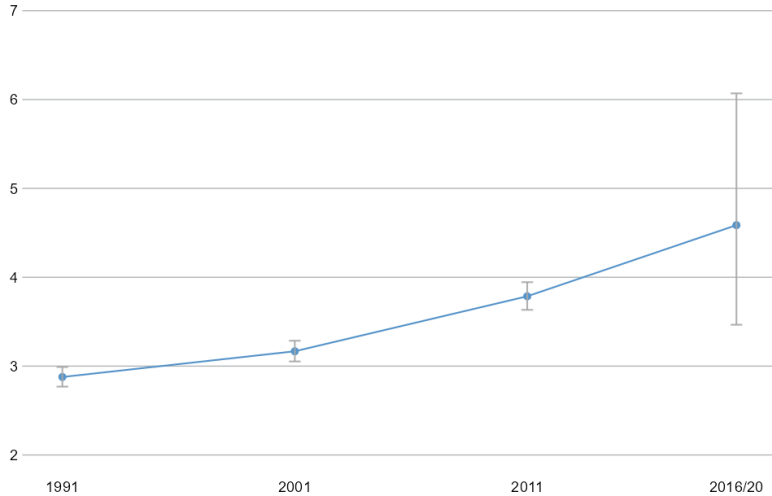
Mobility trends



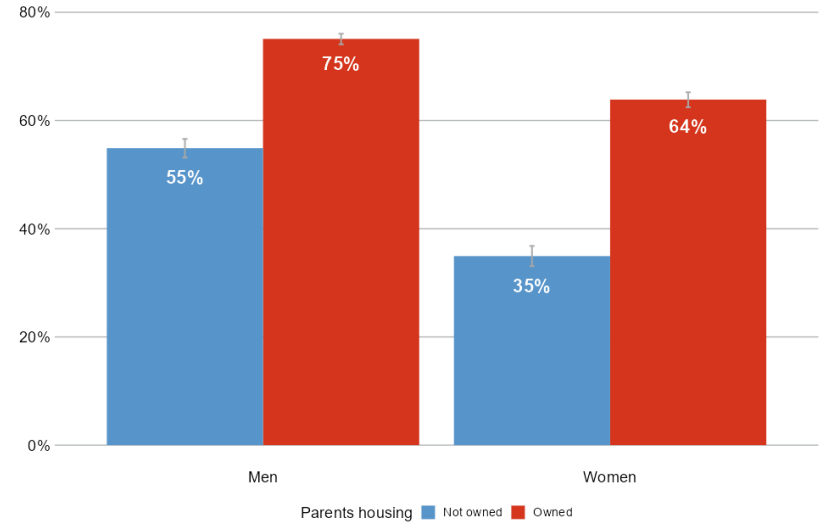
What has happened to occupational mobility over the decades?



Does parents' home ownership predict children's home ownership?



Relative housing mobility has worsened steadily since 1991.

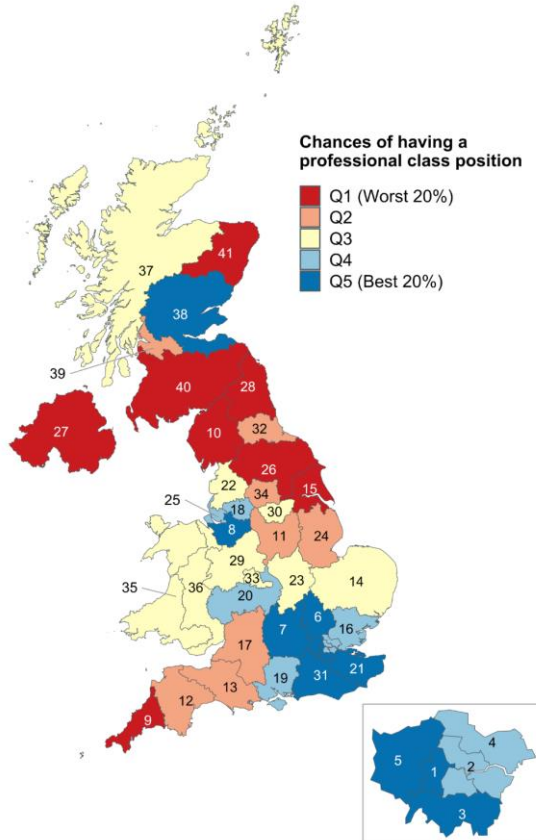


Women are significantly less likely than men to own their homes.

Geographical findings

The background of the slide features a diagonal split. The upper-left portion is a light peach color, while the lower-right portion is white. A thick, solid orange line runs diagonally from the bottom-left towards the top-right, separating the two background colors.

Where are the best chances of getting a professional job?

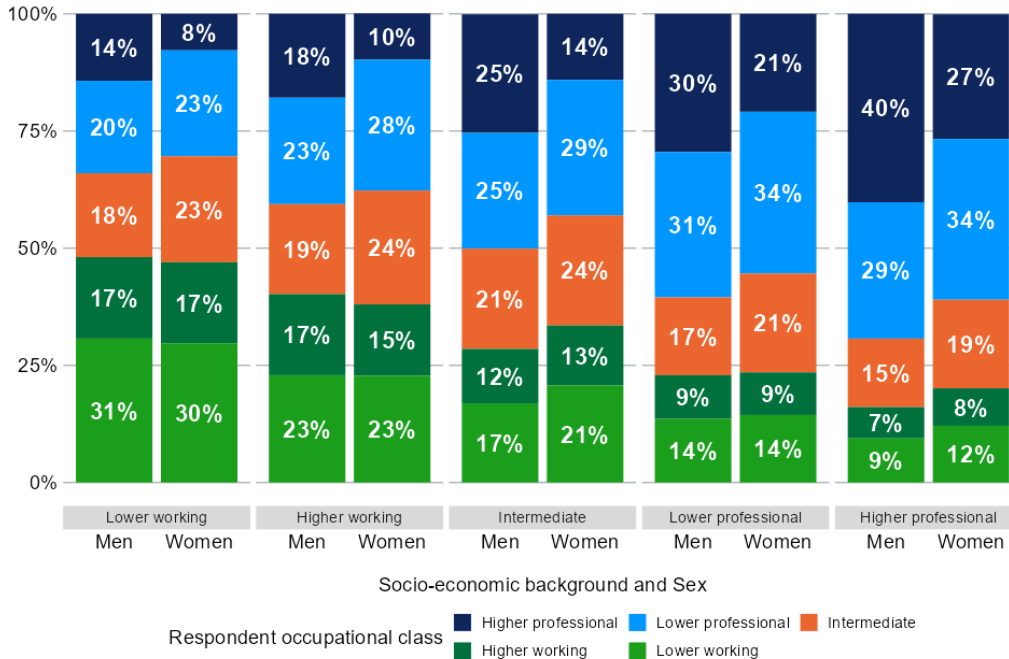


- First in-depth look at outcomes and drivers split by 41 regions
- Taking starting point into account, people who grew up near London, Manchester and Edinburgh have better chances of getting a professional job
- The chances of moving from working class to a professional job are best in Outer London and Surrey and Sussex

Differences by protected characteristics

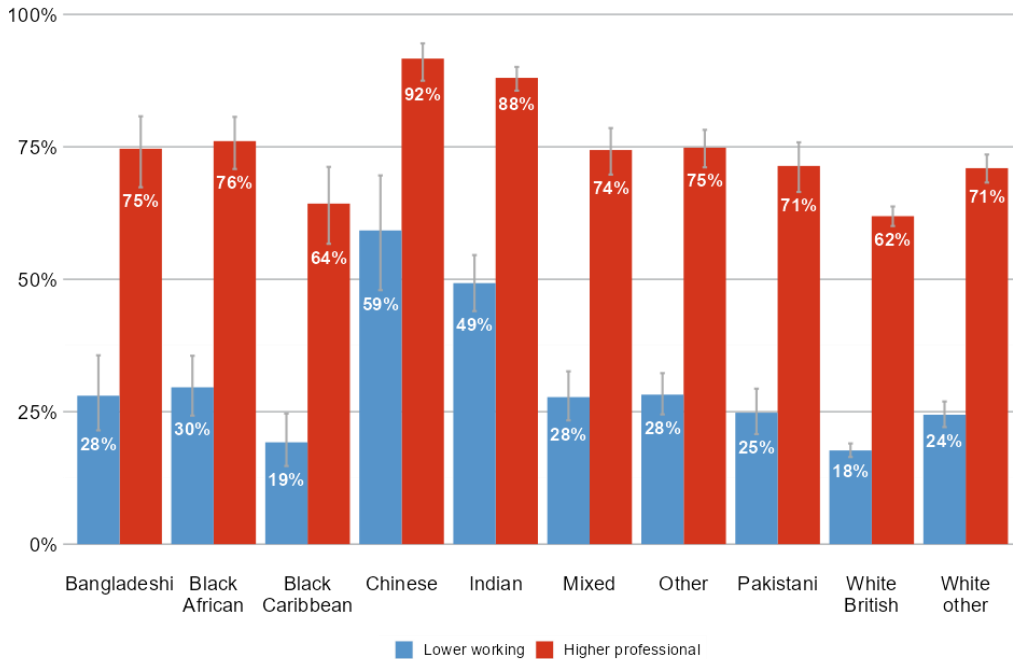
A decorative graphic element at the bottom of the slide, consisting of a thick orange line that curves upwards from left to right, creating a wedge-like shape against the white background.

How do women's mobility chances compare with men's?



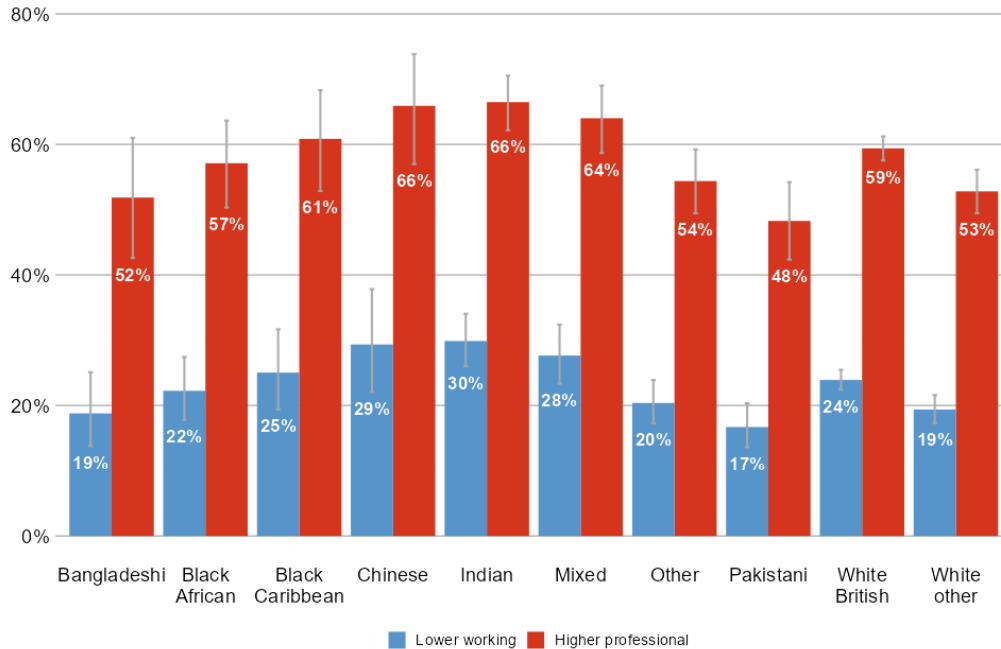
- 5 occupational classes, both for background and current occupation
- Women generally have less upward mobility than men from the same SEB
- Among people from higher-professional backgrounds, 40% of men and only 27% of women are in higher-professional class jobs

What about degrees?



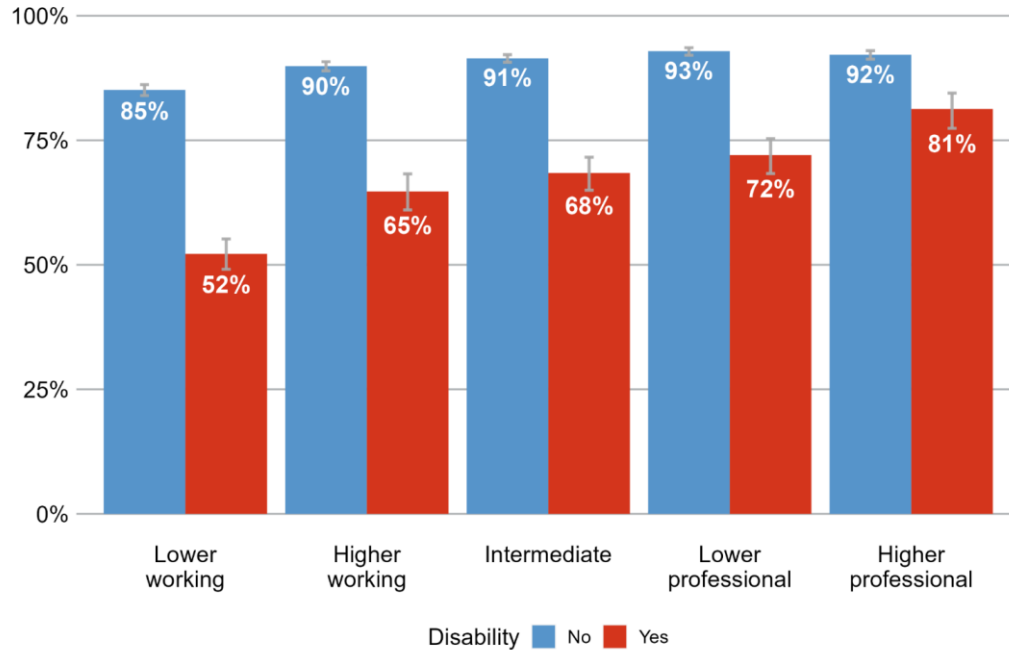
- Young people from Chinese, Indian, Black African, Bangladeshi, and Pakistani groups are more likely to obtain degrees than White people from the same SEBE

Does the same ethnicity pattern hold with access to professional jobs?



- Young people from an Indian and Chinese ethnic background have higher chances of entering professional occupations compared with other ethnic groups from the same SEB
- But young people of Pakistani have significantly poorer chances of entering professional occupation

How do disability and SEB interact when we look at economic activity?



- Young people with a disability are **less likely to be economically active**
- Yet the gap is **smaller among those from a higher professional SEB**
- Mobility outcomes of people with a disability are consistently worse than those without, in occupation, income, education and housing



Social Mobility
Commission

Data Explorer Tool



Social Mobility
Commission

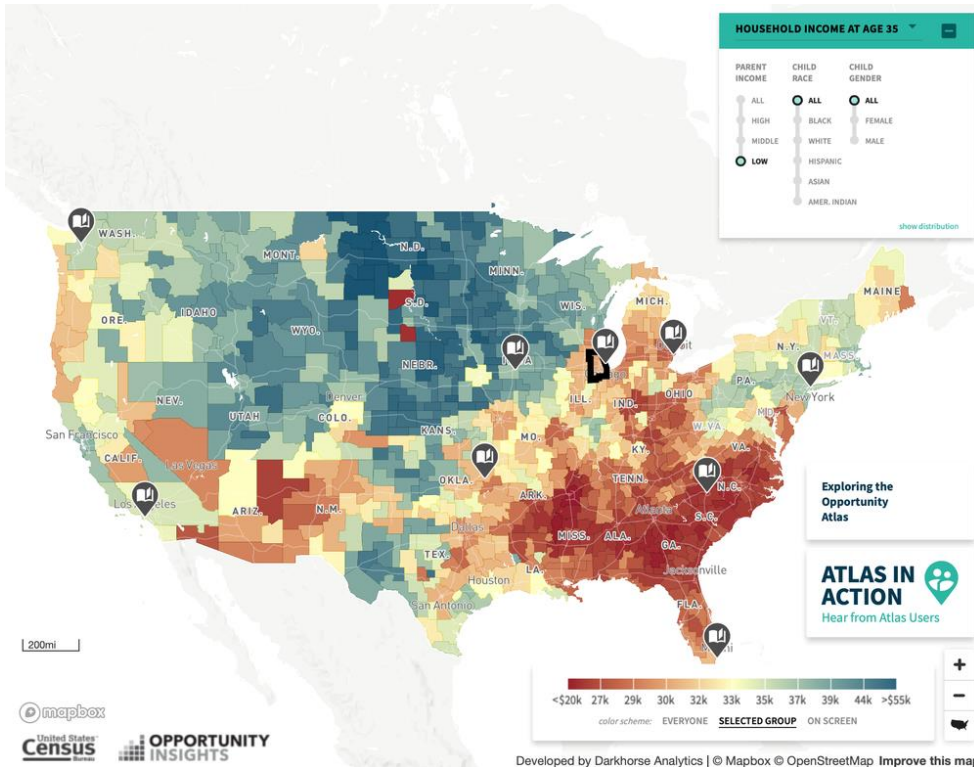


Jacalyn Guy
Deputy Director, Evidence & Analysis
SMC



Rosa Alonso
Senior Data Analyst
SMC

Where did the idea for an interactive tool come from?



The idea was inspired by the American Economist, **Raj Chetty's, Opportunity Atlas** (pictured).

To our knowledge, nothing similar to this tool existed in the UK. We wanted a way to **simplify and translate** the findings from our State of the Nation report.

What does the tool do?



The data explorer tool is a collection of **interactive maps, charts and commentary** that show social mobility measures across the UK.



The tool presents the underlying data in a **more accessible way**, and allows users to explore the data and insights to **meet their area's needs**.



It serves as a **direct complement** to our State of the Nation report.

It brings the report and findings to life.

Data Explorer Tool

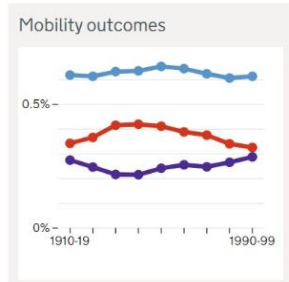
[Click here for access](#)

State of the Nation 2023: data about social mobility in the UK

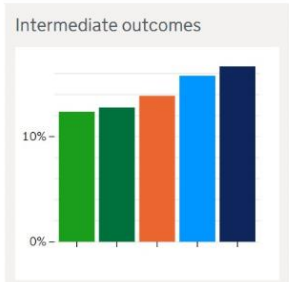
State of the Nation is an annual report into social mobility in the UK. It uses original data and analysis from the Social Mobility Commission (SMC).

State of the Nation uses the SMC's own measurement framework, the **Social Mobility Index**.

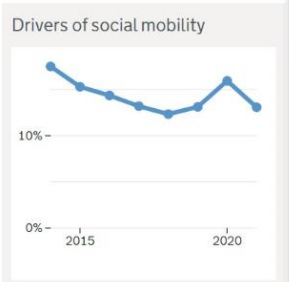
Highlighted data



There continues to be more upward than downward mobility for men, this surplus has been shrinking in recent decades and chances of long-range upward mobility have been declining. [Read more](#)



Socio-economic background is strongly related to the level of young people's earnings. [Read more](#)



In 2021, youth unemployment in the UK fell back to pre-pandemic levels. [Read more](#)

Find data by region

In 2023, we have delivered on our plan to break indicators down by geography. The regions that we use are part of a system developed by the Office for National Statistics (ONS), known as International Territorial Levels (ITLs).

Find an area

Featured region



[Cornwall and Isles of Scilly](#)

Read the [full State of the Nation 2023 report](#) on GOV.UK.

Intermediate Outcomes - Economic Activity

Social Mobility Commission State of the Nation

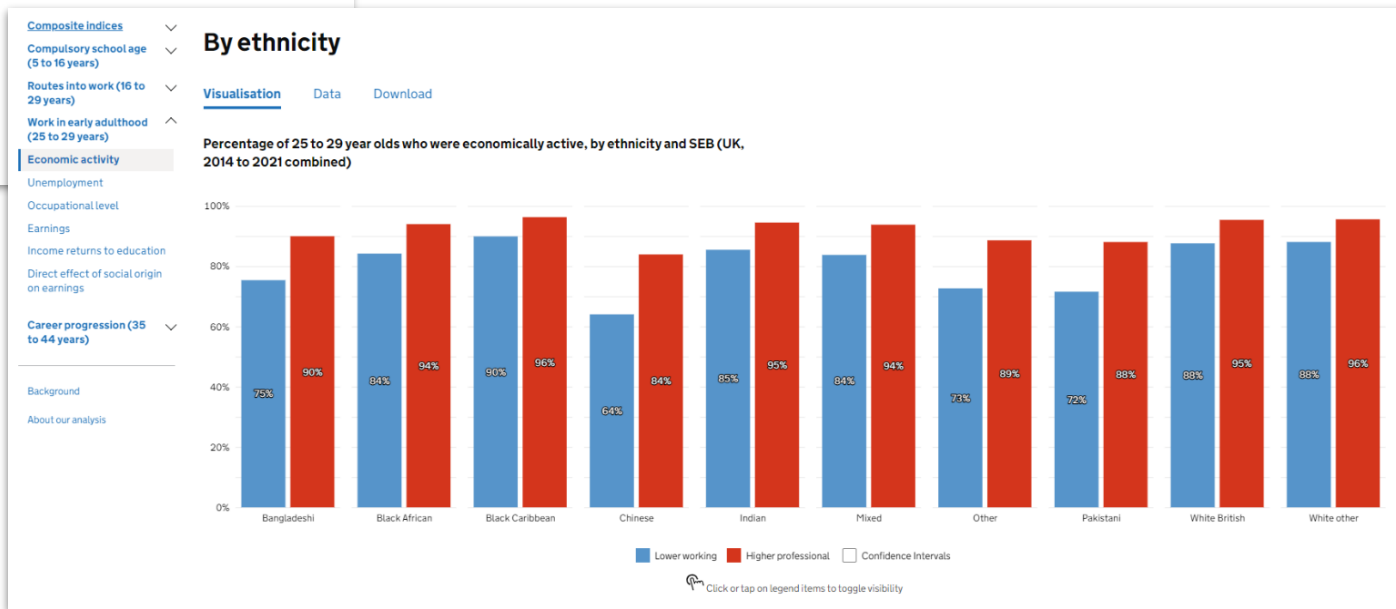
Mobility outcomes Intermediate outcomes Drivers of social mobility Social mobility by area

Composite indices
Compulsory school age (5 to 16 years)
Routes into work (16 to 29 years)
Work in early adulthood (25 to 29 years)
Economic activity
Unemployment
Occupational level
Earnings
Income returns to education
Direct effect of social origin on earnings

Economic activity

Data on the percentage of 25 to 29 year olds who are either in work or looking for work, by socio-economic background (SEB).

1. [Summary main findings](#)
2. [By socio-economic background](#)
3. [By area](#)
4. [By sex](#)
5. [By ethnicity](#)
6. [By disability status](#)
7. [About the data](#)
8. [Download the data](#)



Composite index

Social Mobility Commission State of the Nation

Mobility outcomes Intermediate outcomes Drivers of social mobility Social mobility by area

Composite indices
Promising prospects
Precarious situations

Promising prospects

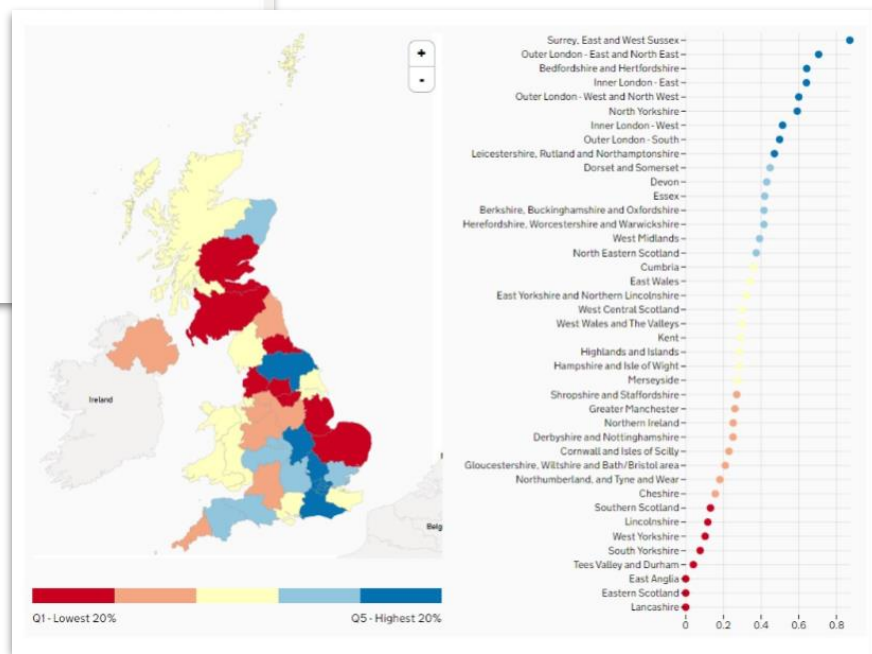
Data on the UK regions with the most 'promising prospects' for 25 to 29 year olds – measured by levels of university education, professional work, and earnings.

Visualisation Data Download

Index of 'promising prospects', by region (UK, 2018 to 2022 combined)

41 regions in the UK are ranked from the lowest to highest composite scores. They are then divided into 5 equally-sized groups ('quintiles'), from 1 (lowest) to 5 (highest). Areas with the highest scores have the most promising prospects for young people.

About our analysis



Social Mobility by Area

Find an area

Highlands and Islands

Inner London - East

Inner London - West

Kent

Lancashire

[Show more](#)

[About our analysis](#)

Inner London - West

This page shows how Inner London - West is ranked for 5 different aspects of social mobility.

How regions are ranked

For each aspect, [41 regions in the UK](#) are ranked from the lowest to highest values. They are then divided into 5 equally-sized groups ('quintiles'), from 1 (lowest) to 5 (highest).

For example, Inner London - West ranks in the top 20% of regions for Promising prospects.

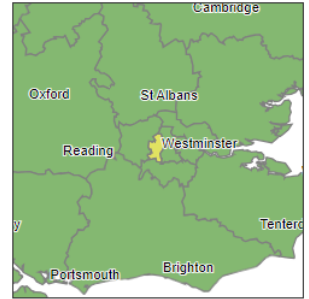
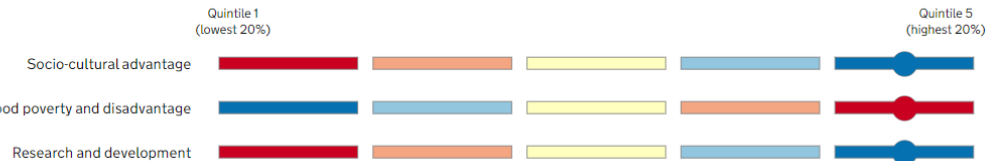
Intermediate outcomes

Intermediate outcomes measure the experiences of young people as they move through education and into work.



Drivers of social mobility

Drivers are the background conditions that make social mobility easier or more difficult.



Districts in the Inner London - West region

ITL3 areas: Camden and City of London, Kensington and Chelsea, and Hammersmith and Fulham, Wandsworth, Westminister

Local authorities: City of London, Camden, Westminister, Hammersmith and Fulham, Kensington and Chelsea, Wandsworth

Thank you for joining us

Please find our data tool at the following address:



<https://social-mobility.data.gov.uk>



contact@socialmobilitycommission.gov.uk



020 7340 8397



@SMCommission



social-mobility-commission



@socialmobilitystories



socialmobilityworks.org



gov.uk/government/organisations/social-mobility-commission

Social Mobility Commission
Sanctuary Buildings
20 Great Smith Street
London
SW1P 3BT